

Lincoln

UNIVERSITY



LINCOLN UNIVERSITY
PENNSYLVANIA

1854

Founded 1854

LINCOLN UNIVERSITY is a small, privately controlled, non-sectarian, liberal arts college, located on a 350 acre campus in the beautiful rolling countryside of southern Chester County, Pennsylvania, about midway between Philadelphia and Baltimore, along U. S. Highway No. 1.

THE AIM of Lincoln University is to provide an excellent 4-year college program in the arts and sciences at the lowest possible cost to the student.

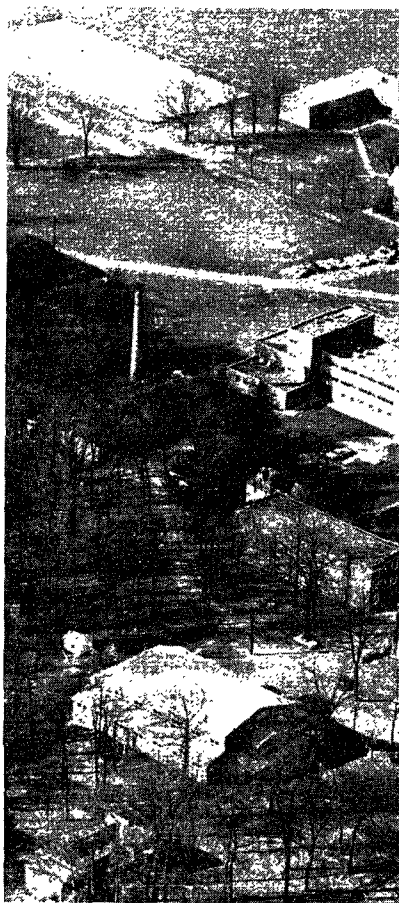
THE ACADEMIC PROGRAM is broad and rigorous. Courses required for graduation include English, literature, a foreign language, religion or philosophy, natural science, social science, music and art, and physical education. Courses in the following subjects are offered:

- The Humanities—Ancient Languages, English, Modern Languages, Music and Art, Philosophy, Religion
- Mathematics
- The Natural Sciences—Biology, Chemistry, Geology, Physics and Astronomy
- General Business
- Education } leading to teacher
Physical Education } certification
- Engineering—A 3-2 or 3-3 program, leading to both AB degree and BS in Engineering degree (Aero-Space, Agricultural, Chemical, Civil, Electrical, Industrial, Mechanical, or Sanitary Engineering) in cooperation with Drexel Institute of Technology, Lafayette College, or Pennsylvania State University.

THE COSTS of Attending Lincoln are among the lowest in the U. S.

	Resident Students	Day Students
Tuition	\$ 600	\$600
General Fee	100	100
Room	250	
Board	410	
Total	\$1,360	\$700

(Plus books, travel, and personal expenses). These costs may be offset in part by scholarships, National Defense Student Loans, and part-time student employment.



LINCOLN UNIVERSITY is a privately supported institution. In Lincoln's special purpose, the Constitution of Pennsylvania provides substantial aid, including scholarship aid for qualified Pennsylvania students.

THE CAMPUS includes two lecture halls, the new Wright Hall of sciences, the library, the chapel, the athletic fields, four comfortable dining halls, and a student canteen.

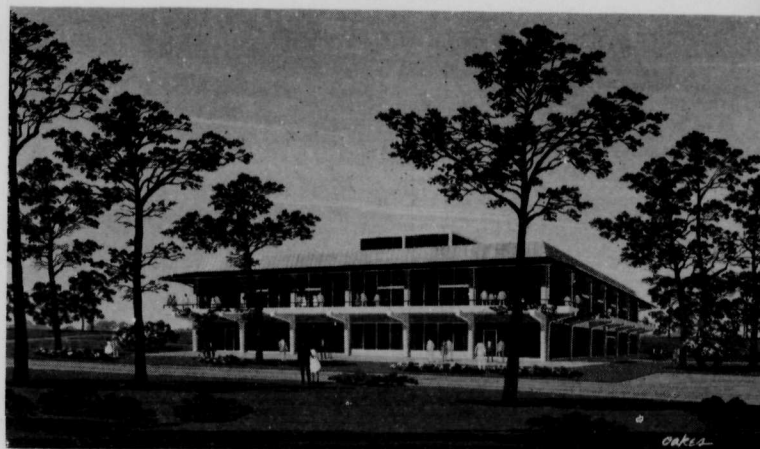


Aerial View of the Campus

LINCOLN IS GROWING—

LINCOLN UNIVERSITY is basically a privately supported institution. In recognition of Lincoln's special purpose, the Commonwealth of Pennsylvania provides substantial assistance, including scholarship aid for qualified Pennsylvania students.

THE CAMPUS includes two large recitation halls, the new Wright Hall of the physical sciences, the library, the chapel, the gymnasium, athletic fields, four comfortable dormitories, a dining hall, and a student canteen.



**The New \$900,000 Dining Hall-Student Union
to be completed by 1963.**



THE STUDENT BODY—While traditionally dedicated to the higher education of the Negro, Lincoln is rapidly becoming an integrated institution. It has a remarkably cosmopolitan student body of about 400, drawn from 22 states and 17 foreign countries. It thus offers unique opportunities for experience in international relations.

THE FACULTY includes scholars from leading universities such as California, Columbia, Harvard, Johns Hopkins, Minnesota, Northwestern, Pennsylvania, Princeton, Stanford, and Yale. There is one faculty member for every 11 students, so that a close, friendly relation between instructor and student is possible.

THE LIBRARY—the heart of the college—contains over 80,000 carefully chosen and easily accessible volumes and receives over 400 current periodicals covering the major fields of learning.

CAREER PREPARATION—The Lincoln graduate is prepared to enter at once upon a career in business, government service, journalism, secondary school teaching, social work, or any one of several other fields, depending upon the program he has followed. Or, he may enter Medical or Dental School, Law School, Theological School, or general Graduate School. About one-half of Lincoln graduates continue their studies elsewhere toward graduate and professional degrees.

ACTIVITIES

THE ATHLETIC PROGRAM is designed to meet the needs and to serve the interests of the students. Almost 90% of the student body participates in some form of athletic activity—intramural or inter-collegiate baseball, basketball, soccer, tennis, track, or wrestling. Instruction in badminton, golf, and gymnastics is offered by the faculty.

OTHER ACTIVITIES—Several clubs, organized along lines of academic or extra-curricular interest, meet frequently. They include the Glee Club, the Biology Club, the Chemistry Club, the Chess Club, the Philosophy Club, and the Political Science Club. There are opportunities to participate in dramatics and debating, and to attend the concerts of the Visiting Artists Series. The proximity of the campus to Philadelphia, Baltimore, and Wilmington enables students to spend some week-ends in the city.

ADMISSION

ADMISSION REQUIREMENTS—To be admitted to Lincoln, a student must have been graduated from a state accredited or a regionally accredited high school or have had equivalent training. Fifteen units of secondary school credits or the equivalent are required; they must include 3 units of English, 1 unit of elementary algebra, and 1 unit of plane geometry; the remaining units should include 2 of a single foreign language, 1 of history or civics, 5 of academic electives (preferably in science, language, mathematics, and history or other social science), and 2 of other elective subjects. All candidates from United States territory are required to take the Scholastic Aptitude Test of the College Entrance Examination Board. Applicants from outside United States territory must submit the results of examinations given by their respective schools.

Under certain conditions, a student may be admitted to advanced standing by transfer from another college.

For further information, mail the attached card or write:

**The Registrar
Lincoln University
Lincoln University, Pa.**